



BDSIP

SERVICE OFFER

APRIL 2023 - MARCH 2024

Contents

INTRODUCTION

3 About BDSIP

SCHOOL IMPROVEMENT

4 School Improvement Partner Programme and Curriculum Support

6 Curriculum Advisory Support

SEND, INCLUSION AND WELLBEING

7 SEND and Inclusion Service

8 Attendance Service

9 Counselling Service

10 Speech and Language Therapy

CAREERS, EMPLOYABILITY AND WORK EXPERIENCE

11 Careers Advice

12 Work Experience

13 Aimhigher

14 Year 13 Employability Day

15 Grown Up Me: Primary Careers Programme

CONTINUING PROFESSIONAL DEVELOPMENT (CPD)

16 CPD Package and Pay-as-you-go

DIGITAL SUPPORT SERVICES

18 Curriculum Computing and Data

19 Primary and Secondary Internet Services

20 Education Data Management

21 Management Information System (MIS) Support

GOVERNOR SERVICES

22 Governor Advice and Support

23 Governor Training

23 Headteacher Performance Management

SIGNPOSTING OTHER SUPPORT

24 Employee Assistance Programme (EAP) by Education Support

25 The Key

26 Meet the team

27 Our service standards

INTRODUCTION

About BDSIP

What makes us unique?

- We are **school-owned and school-led**: we are owned by 56 local schools, who drive our organisation – from how we are run to the services we provide.
- Because we're school led and not-for-profit, we are guided by **what's best for the school**, either delivering directly, brokering support from others, facilitating school-school support, or signposting as appropriate to meet each school's needs.
- We commit to **supporting our schools for the long-term**.



How we work

- We work in partnership with each school to agree their priorities, tailoring our services to meet each customer's needs.
- All of our delivery staff have deep expertise in their chosen field, with most having worked recently as teachers and senior school leaders.
- We draw on a broad pool of trusted associates, who complement and extend our in-house capacity.
- We build creative partnerships with trusted external organisations, bringing the best possible support and innovative services to our schools.

In place of the deleted paragraph at the end: For more information about our organisation and how we work with schools, see our [Service Standards](#).



OUR VISION IS TO BECOME OUR SCHOOLS' MOST TRUSTED PARTNER, WORKING WITH THEM TO DELIVER THE BEST OUTCOMES FOR ALL OUR YOUNG PEOPLE.



SCHOOL IMPROVEMENT

School Improvement Partner Programme and Curriculum Support

Overview

The school improvement partner programme supports and challenges your school to continually develop its practice, building the highest standards of leadership and management expertise to deliver the very best outcomes for all.

We will support you in shaping your response to the unique challenges and priorities facing your setting: be that effective teaching and learning leading to outstanding progress for all, Ofsted inspection readiness, or the growing number of pupils with complex needs.

Highly experienced school improvement partners in our primary, secondary and SEND teams will:

- Work with school leaders to strengthen the quality and consistency of teaching and learning, supporting all students to make good or better progress.
- Build a strong relationship and professional dialogue with school leaders to create and agree a plan to meet your school improvement priorities.
- Bring expert knowledge of the Education Inspection Framework (EIF) together with a practical knowledge and experience of how schools can improve outcomes.
- Provide advice, support and robust evidence-based challenge for all levels of school leadership.

Examples of areas of focus:

- 1:1 coaching and mentoring sessions for the headteacher and other senior leaders.
- Ofsted preparation including subject deep dives, SEF validation and school improvement plan evaluation and development.
- Support in undertaking whole school learning reviews.
- Support in evaluating the quality of teaching and learning through observations, book looks, data analysis and pupil voice.
- Support in reviewing the progress of specific groups of pupils and evaluating the impact of interventions/approaches.
- Support in evaluating the impact and efficacy of assessment policy and procedure.

Secondary offer

The secondary school improvement partner programme includes:

- School improvement partner support and challenge.
- Curriculum support for English.
- Curriculum support for mathematics.
- Curriculum support for science.

Each of these core subject areas is led by a skilled secondary practitioner with significant experience of supporting school development in a range of settings. They will work with your teachers, year group leaders and heads of department to ensure that the development and delivery of these subjects secure outstanding progress and outcomes for your students.

BDSIP will offer at twelve full days of tailored support, working in partnership with your school.

Pricing: £7,800 – £12,000 for the full package, depending on cohort size. Bespoke packages are also available.



“BDSIP have been so supportive and helpful to our development as a team at Sydney Russell School. They have consistently showed us smarter and more creative ways to work together for the betterment of our teaching and therefore the outcome of our students”.

Tsvetelina Maslenishka, The Sydney Russell School



“Valence is very pleased to have had you as our SIP. As always, your professional support, expertise and pedagogical guidance, has been invaluable.

Both Janice and I have been able to explore pertinent lines of curriculum-based inquiry, which has strengthened and challenged existing professional practice, timely and positively.

In a safe, non-threatening manner, you have guided us. We thank you for the support and we know we can always come to you for any further advice, or signposting.”

Hilary Buckland, Deputy Headteacher,
Monteagle Primary School

Primary offer

Recognising the broad range of subjects where primary schools are seeking support, our primary SIP programme provides an initial allocation of days which schools can tailor to meet their individual priorities. This includes SIP and subject specific support and challenge. For example, you may wish to use two days to focus on early reading and require a curriculum adviser to work with teachers, the English lead and phase leader. The current range of subjects where we can offer support is outlined in the Curriculum Advisory Support section overleaf.

BDSIP will offer six full days of tailored support, working in partnership with your school.

Pricing: £3,900 – £6,000 depending on cohort size

To discuss your requirements, contact: Kate Gooding, Senior School Improvement Adviser on **07976 239 885** or **kate.gooding@bdsip.co.uk**

Curriculum Advisory Support

In addition to curriculum support provided as part of your SIP package, we can also offer further support from our specialist advisory teachers and associates. They can:

- Work with subject leaders, providing in-class support or whole school training.
- Provide guidance on the best teaching strategies, underpinned by current research.
- Provide guidance on planning and assessment.
- Support the development of the whole school curriculum, ensuring a coherent progression of knowledge and skills.

Through a combination of in-house expertise and in close collaboration with schools, the London District East Teaching School Hub, East London Maths and English hubs, and other local partners, we can offer subject specific support from Early Years to key stage 5.

This includes:

- | | |
|-------------------------|-----------------------------|
| • English | • Geography |
| • Mathematics | • History |
| • Science | • MFL |
| • Art | • PE |
| • Computing | • Phonics and early reading |
| • Design and technology | • RE |
| • Drama | |

The range of subjects where we can offer specialist support and guidance is constantly evolving. If you do not see what you need on the list above, please contact us to discuss your requirements.

Pricing: Pricing is dependent on the level and type of support.

To discuss your requirements, contact:

Kate Gooding, Senior School Improvement Adviser – Primary, on **07976 239 885** or **kate.gooding@bdsip.co.uk**



“Thank you very much for your exceptionally productive visits. Your comments, expertise and suggestions for next steps are very valuable.

I am pleased that you were able to come into school – it is a pleasure to work with you. My staff have been very complimentary, and they value your insight and coaching.”

Grant Krog, Headteacher, The Leys Primary



“It has been really beneficial receiving support on the SEN recovery plan. For all SENCos, this was new after the pandemic. Your support allowed us to return to school successfully, so it was really useful.

You have also connected me with several people who have guided me and supported the writing of various policies for the website, ensuring they are the best they can be.”

Jade Beech, SENCo, St Margaret’s Primary School

SEND, INCLUSION AND WELLBEING

Send and Inclusion Service

Building schools’ capacity to deliver outstanding provision and outcomes for SEND and inclusion.

An experienced inclusion adviser will work closely with your SENCo and inclusion leads to create a bespoke package of support, which draws on the extensive expertise of the BDSIP inclusion team. This includes specialists in autism, language and communication, social, emotional and mental health needs, cognition and learning, literacy and numeracy, and outstanding leadership in SEND and inclusion.

Focusing on your individual school priorities, our inclusion specialists will:

- Ensure your school has high-quality provision for SEND and inclusion, both with respect to High Quality First Teaching and bespoke packages of support.
- Model the teaching of programmes of learning for SEND.
- Support your SENCO to facilitate the effective implementation of the SEND Code of Practice (2015) and ensure compliance with the Equalities Act (2010).
- Support school delivery of SEND Recovery Plans post Covid-19 related school closures.
- Support effective self-evaluation, action planning and policy development.
- Ensure SENCos and inclusion leads can make informed judgements with respect to whole school SEND and inclusion practice.
- Deliver high-quality CPD to support the development of outstanding inclusion practice in your school.
- Support your SENCo with the development of pedagogical principles to further support High Quality First Teaching.
- Mentor and coach new SENCos and inclusion leads to become outstanding practitioners.
- Support your SENCo with the identification of SEND.
- Provide high-quality specialist support and advice for specific SEND categories of need.
- Support your school leaders to develop and implement a curriculum for SEND and vulnerable learners, which demonstrates clear intent and outstanding impact on progress.
- Provide advice and guidance to support you in meeting the needs of individual SEND and vulnerable learners.
- Review SEND and inclusion policies and practices with school leaders, to support preparation for Ofsted.
- Support your SENCO and inclusion leads to become actively involved in a ‘Community for Inclusion’ to share best practice for outstanding leadership and approaches to ensure an inclusive school community.

BDSIP will offer at least six full days of tailored support, working in partnership with your school.

Pricing: £2,700 – £4,800 depending on cohort size

To discuss your requirements, contact: Lee Boyce, Principal Adviser, Education and Inclusion, on **07890 630 644** or **lee.boyce@bdsip.co.uk**

Attendance Service

Supporting your school to maintain outstanding attendance.

An experienced attendance adviser will work closely with your attendance leads to create a bespoke package of support to meet your responsibility for proactively managing and improving attendance across the whole school community, as set out in **Working together to improve school attendance** (published May 2022).

Focusing on your school priorities, your attendance adviser can:

- Support your school leaders to be fully conversant with the school's legislative responsibilities regarding attendance.
- Provide strategic advice to support the development of a whole school culture that promotes the benefits of outstanding attendance.
- Provide individual casework support for students with persistent absence.
- Work in partnership with your attendance lead and pastoral teams to engage hard-to-reach families.
- Work in partnership with your attendance leads to prepare cases for legal action when all other strategies have failed to improve attendance.
- Support your attendance leads to develop a proactive approach to reducing persistent absence and improving the attendance of students at risk of falling below 90%.
- Support attendance leads with the analysis of attendance and absence data to identify students or cohorts who require support with their attendance and put effective strategies in place.
- Work in partnership with the school, providing strategic advice to develop and implement systems proven to improve attendance and punctuality.

Pricing: £10,920 for the equivalent of one full day of support per week. £5,850 for the equivalent of 0.5 days of support per week. Individual days can be purchased at a cost of £375 per day.

To discuss your requirements, contact: Hannah Hamid, Senior Inclusion Adviser, on **07821 681 746** or **hannah.hamid@bdsip.co.uk**



"We are so pleased with the support we receive from the Attendance Service.

We feel far better equipped addressing attendance issues with families, knowing that we have the support of an experienced adviser to call on.

The attendance service can provide services which our staffing structure does not enable us to carry out ourselves, including home visits and formal correspondence. The regular meetings in school with the attendance lead provides a forum to discuss cases and strategies to best support persistent absentees.

We feel reassured knowing we have support on hand to advise us with regards to legal action, should this ever become necessary."

Nina Rajan-Weare, Assistant Head Teacher,
John Perry Primary School



"Our children have built a relationship with another adult that they feel they can trust and that can support them with their emotional wellbeing. It is a time in their week which is just about them, and they have told us how important these sessions are to them.

We have been able to work with children and offer them counselling where they have learned key life skills to help them with emotions and how to more effectively engage with their peers"

Harriet Daley, Deputy Headteacher,
Henry Green Primary School

Counselling Service

Supporting your school to meet the emotional wellbeing needs of your learners and staff.

The BDSIP counselling service provides a high-quality, affordable service for mainstream schools and specialist settings, offering vulnerable learners person-centred counselling. The service is delivered by qualified counsellors, who receive professional support and development through BDSIP. Support can be tailored to individual needs, and additional therapeutic approaches like CBT, art or play therapy can be offered, where they suit the needs of the student.

The service has a proven track record of positively impacting students to better understand and communicate their emotions, resulting in improvements in their learning, mental health, wellbeing, social relationships and behaviour.

Counsellors are also able to provide services to families and staff to meet wider objectives in a whole school wellbeing plan, providing targeted support for teacher wellbeing.

Focusing on your school priorities, your counsellor will:

- Offer regular therapeutic counselling for vulnerable students who do not meet Child and Adolescent Mental Health Service (CAMHS) thresholds.

- Provide a mandatory daily debrief, with an appropriate member of school staff, to monitor impact and ensure due diligence to safeguarding.
- Provide a half-termly evaluation report to track impact and progress for each student in receipt of counselling.
- Provide the opportunity for confidential counselling support for staff to improve overall wellbeing and mental health.
- Provide the opportunity for counselling support for families.
- Provide support for referrals to other agencies, when required.
- Provide input into students' individual support plans with strategies that work to encourage emotional regulation.

Pricing: £7,500 for one day per week with a qualified counsellor. Schools in Barking and Dagenham receive a subsidy of £1,000 per day, funded by LBBD through DSG.

To discuss your requirements, please contact Kathryn Webb, Inclusion Adviser and Counselling Service Lead, on **07866 912 850** or **Kathryn.Webb@bdsip.co.uk**

Multi-Disciplinary Therapeutic Services, including Speech and Language Therapy, in partnership with Words First

We are delighted to work in partnership with Words First Ltd to provide a range of therapeutic services, including speech and language therapy, occupational therapy and educational psychology, to support the development of outstanding provision in mainstream and specialist settings. Words First have a proven track record of success in schools across London with all of their delivery team holding the relevant qualifications and professional registrations.

Speech and Language Therapy and Occupational Therapy Services

Focusing on your school priorities, Words First will:

- Provide eight hours of therapy time per day purchased.
- Provide an agreed number of assessments.
- Provide support with Education Health Care Plan (EHCP) applications.
- Develop individualised programmes for an agreed number of students.
- Facilitate interventions.
- Provide training and supervision for teaching assessments to deliver Words First intervention programmes.
- Provide access to all Words First resources.
- Work with your school to embed key strategies to support High Quality First Teaching into the curriculum.
- Offer onsite staff training and professional development.
- Provide support for parents.

- Develop six-monthly impact reports and case studies to evaluate how your money has been spent.
- Provide clinical supervision in line with professional guidelines.

Schools can purchase each service separately or create a multi-disciplinary package by combining the services. Service Level Agreements can be created to meet your needs and budget with packages which include ad-hoc purchasing and regular weekly support.

Educational Psychology Service

This is the latest addition to Words First multidisciplinary team.

Focusing on your school priorities, Words First will:

- Provide assessments for EHCPs.
- Provide general assessments for advice and guidance.
- Offer on-site training and professional development.
- Provide access to Words First resources.
- Signpost to other relevant services, where appropriate.

Words First offer flexible packages to meet your needs and budget starting with ad-hoc purchasing of a minimum of 2 days to regular support of 2 days per half term.

Pricing: £14,630 for one day per week (38 visits)
£7,315 for one day per fortnight (19 visits).

To discuss your requirements, contact: Lee Boyce, Principal Adviser, Education and Inclusion, on **07890 630 644** or lee.boyce@bdsip.co.uk



Careers advice for secondary schools

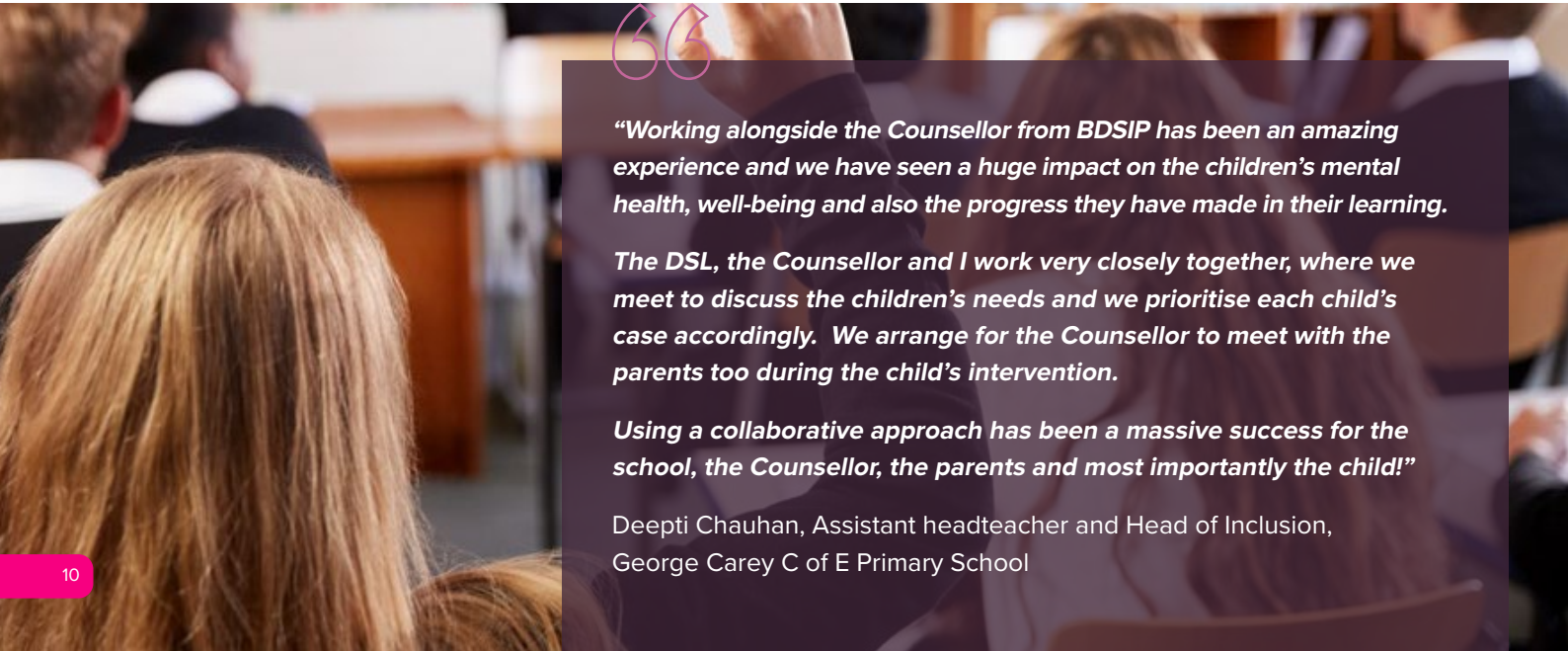
Supporting young people to make positive, informed and aspirational choices about their future with high-quality, expert careers advice.

Our team of Level 6 qualified careers advisers:

- Bring deep expertise in the local education environment, employment opportunities and higher education options, equipping students with the knowledge to make informed decisions about their future.
- Provide support for students at critical points in their progression through years 8 to 13.
- Conduct one-to-one interviews, assemblies, group sessions, parents' evenings, and team days to meet whole cohort and individual students' needs. These can be face-to-face in school or delivered online depending on circumstances and each school's preference.
- Support years 12 and 13 to build their experience, knowledge and confidence regarding higher education and employment.
- Give students the tools they need to meet their goals, with individual action plans completed at every careers guidance interview.
- Lead termly network meetings to bolster staff confidence, improve knowledge and share good careers guidance practice.

Pricing: £30,000 - £34,500 depending on volume of support, which is typically a dedicated careers adviser on a part time (0.5fte) basis. Individual days and bespoke packages of support can also be purchased at a cost of £420 per day.

To discuss your requirements, contact: Aasiya Hassan, Head of Careers Education and Work Experience, on **07976 238 135** or aasiya.hassan@bdsip.co.uk



“Working alongside the Counsellor from BDSIP has been an amazing experience and we have seen a huge impact on the children’s mental health, well-being and also the progress they have made in their learning.

The DSL, the Counsellor and I work very closely together, where we meet to discuss the children’s needs and we prioritise each child’s case accordingly. We arrange for the Counsellor to meet with the parents too during the child’s intervention.

Using a collaborative approach has been a massive success for the school, the Counsellor, the parents and most importantly the child!”

Deepti Chauhan, Assistant headteacher and Head of Inclusion,
George Carey C of E Primary School

Work Experience

Providing students with critical employability skills and relevant career experience through a uniquely tailored, high-quality work experience package.

With over 20 years in Barking and Dagenham, we draw on our expertise and unrivalled network of local, regional and national employers – ranging from small organisations to FTSE companies – to match each student with an impactful work experience placement.

Our targeted work experience placements enhance students' understanding of the world of work and careers, help to build the knowledge and skills demanded by the contemporary labour market, enrich their educational experience, and facilitate successful school-to-work transitions.

Through our work experience programmes, we will:

- Provide one-week placements for years 10, 11, 12 and 13, matched to meet the individual needs of each student.
- Provide end-to-end organisation from online student applications, bespoke matching of students' preferences to placements, organisation of work experience placements, an evaluation of placement experience, and work experience certificates.
- Offer you the reassurance that all placements are suitable for your students by carrying out thorough pre-placement employer visits.
- Prioritise provision for Looked After Children, SEND and EHC students. Students in specialist schools can access careers advice and guidance from a qualified adviser and personalised support for work experience. Teachers and support workers are required to support students on a fully assisted or part assisted programme depending on the needs of the student.
- Support you through the delivery of employer engagement activities, including network meetings for school staff, to improve knowledge and share good practice.

In 2021 we streamlined the process of applying for, and being matched with, placements. Our new, online platform allows pupils to easily complete applications electronically and gives the school a real-time overview of progress with applications and the placement matching process. This reduces the school time and resources required to arrange work experience, whilst also allowing the school to see detailed placement information for individual pupils.

The platform also links to a careers package and schools purchasing work experience will be able to access this package at no additional cost.

This enables a comprehensive digital passport to be set up for all work experience students. Schools can use this to plan, track, evidence and evaluate students' activities and the school's progress in achieving Gatsby Benchmarks.

Pricing: £100 per student, £150 per student in a specialist SEN or EHC provision.

To discuss your requirements, contact: Aasiya Hassan, Head of Careers Education and Work Experience, on **07976 238 135** or aasiya.hassan@bdsip.co.uk



"The student shadowed various staff in all duties of registration and was amazed by the number of services offered. Her attendance and appearance were excellent as was her writing skills. Everyone commented on her beautiful clear and accurate handwriting. She listened and accurately followed instructions given to her and as a result was able to assist the registration team in copying certificates and other admin duties. Whilst we have said her confidence and interation requires development she is a young lady in an unfamiliar environment and I am sure had she been with us longer her shyness would have subsided. We wish her well in her future endeavours and hope she enjoyed her time with us".

Anne Searle Deputy
Superintendent Registrar,
LBBD Register Office



"The student is an absolute star. He turns up early ready for work, is well presented and polite. He's eager to learn and asks questions. To be honest, he's a model student and we have all absolutely enjoyed hosting him."

Alison Cornack, Social Value
Lead, Jerrum Falkus

Aimhigher: Higher Education and Employment

Encouraging and enabling more young people to access higher education and to take up professional work opportunities. This innovative programme inspires young people and helps raise aspirations, by exposing students to senior industry professionals, relatable recent graduates, and university lecturers across a range of careers and industries. All sessions are highly interactive, allowing young people to ask practical questions and explore the reality of life in different careers.

The programme includes:

- Professions Mornings for years 8 and 9, expose younger students to the breadth of employment and study opportunities available across sectors, including healthcare, STEM, communication industries, and higher and degree apprenticeships.
- Pathways sessions give year 12 students practical information on university applications, courses, study models, and career progression pathways. Sessions cover a broad range of professions, aligned with the demands of the current and future labour markets, including Pathways to engineering, law, medicine, media and marketing, games design, sport, cyber security, nursing and midwifery, teaching, psychology, pathways to Oxbridge, and pathways to higher and degree apprenticeships.

- Aimhigher coordinators meetings, which bring school staff and university outreach teams together to network, collaborate and share ideas, developments, and best practice.

We are supported in this work by a board range of buisnesses and universities including City University, Coventry University, London South Bank University, Middlesex University, Queen Mary University, UCL, UEL, and Universities of Cambridge, Oxford and Southampton.

Pricing: £5,250.

To discuss your requirements, contact: Aasiya Hassan, Head of Careers Education and Work Experience, on **07976 238 135** or aasiya.hassan@bdsip.co.uk



"I genuinely loved being there everyone in the Registration Office was nice, friendly, welcoming and absolutely amazing. Even though the week was long and full of all sorts of unexpected things, everyone was really supportive and forgiving and even help me correct my mistakes. I learnt a lot."

WEX student placed at the LBBD Register Office



Year 13 employability day

Guiding students through the application process and recruitment process for apprenticeship and employment routes.

An invaluable practical session for year 13 students who are considering the apprenticeship or employment route. This full-day of workshops, delivered in your school, will equip students with the tools they need to make informed choices regarding apprenticeship options, including how to complete applications and prepare for the recruitment and selection processes.

The practical workshops provide each student with tailored guidance, including:

- Where to look for employment, labour market information, career management and applications.
- A CV workshop.
- Preparation for assessment days and online tests.
- Personal presentation, interview skills and assessment day preparation.
- This day is delivered on your school site for up to 20 students.

Pricing: £2,000

To discuss your requirements, contact: Aasiya Hassan, Head of Careers Education and Work Experience, on **07976 238 135** or aasiya.hassan@bdsip.co.uk



Grown Up Me: primary careers programme

Encouraging children to explore and expand their ideas of who they could become.

There is increasing evidence that career-related learning in primary schools has many benefits, including broadening horizons, boosting engagement, raising aspirations, challenging stereotypes and improving transition skills in young pupils.

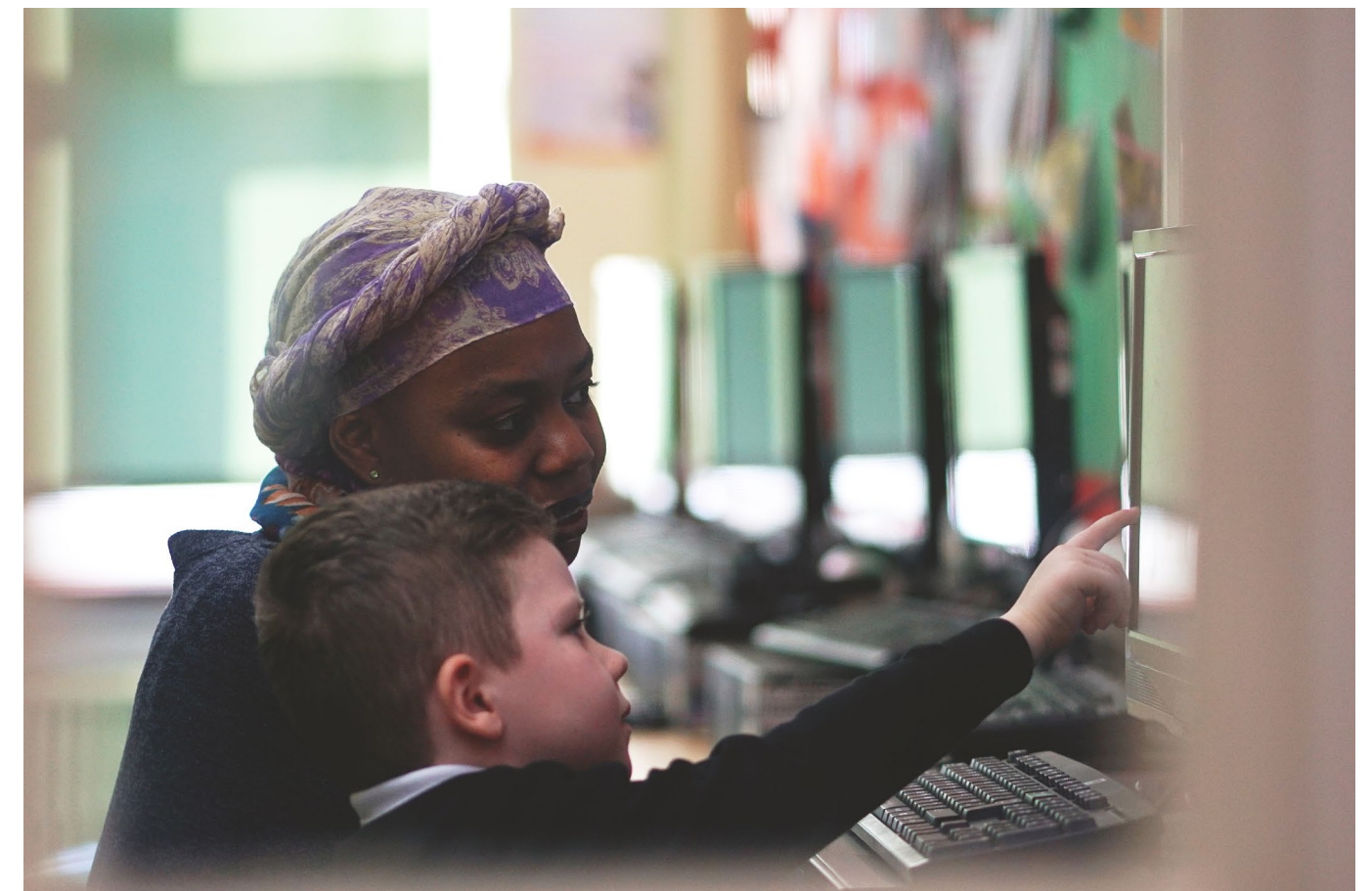
The Grown Up Me programme connects primary schools with local and regional employers and universities across a range of sectors to broaden and build primary pupils' understanding of, and engagement with, the world of work.

Key events include:

- Inspire sessions: For years 3 to 6, these highly engaging and participative sessions, led by experienced professionals from the sector, introduce pupils to a range of roles in industries including healthcare, leisure, digital and creative industries.
- Spotlight workshops: For years 5 and 6, these practical workshops will connect pupils' learning in the classroom to employability skills and sectors within the job market, at a specialist site relevant to the sector. The sectors currently included are construction, green industries and film.
- University Open Day (years 5 and 6) at the University of East London (Docklands campus) gives pupils a taster of Higher Education and insight into life as a university student.
- Network meetings and specialist CPD session to develop staff confidence, enable regular sharing of good practice and build links with employers.

Pricing: £2,500

To discuss your requirements, contact: Aasiya Hassan, Head of Careers Education and Work Experience, on **07976 238 135** or aasiya.hassan@bdsip.co.uk





CONTINUING PROFESSIONAL DEVELOPMENT (CPD)

CPD package and pay-as-you-go

We provide a comprehensive CPD programme to schools across all phases, supporting everyone from teaching assistants to senior school leaders and headteachers. An increasing number of our programmes are accredited and over 88% of delegates would recommend their course to colleagues, with an average rating of 4.2/5 across all of our CPD in 2022.

Our courses are a blend of face-to-face and online sessions which cover the latest in curriculum developments, pedagogy, government policy, and local priorities. In addition to our in-house expertise, we work with universities, the teaching school hub, and a broad range of specialist partners to design and deliver the best courses, development opportunities and professional networks.

Many of our courses are accredited and all are designed to be highly participative. We've introduced a number of courses with multiple sessions, some spanning the academic year. These courses offer delegates the opportunity to build expertise over time and to put tools and techniques into practice, thus consolidating learning and delivering tangible, sustained improvements to High Quality First Teaching.

Key themes within our CPD offer include:

- High Quality First Teaching strategies to support good progress and inclusion for all.
- Specialist training for a variety of SEND including autism, dyslexia, SEMH and SLCN.
- Maths, English and wider curriculum support.
- Primary science, design and technology.
- Working with disadvantaged, vulnerable and autistic children.
- Behaviour; social, emotional and mental health (SEMH); pupil health and wellbeing.
- English as an additional language.
- Mental health and wellbeing.
- Healthy Schools and Personal, Social, Health and Economic Education (PSHE).
- Manual handling training for safe working with learners with physical disabilities.



- Strategic leadership and management training.
- Primary computing and online safety.
- A broad range of professional development networks and conferences.

We regularly work with individual schools/clusters and our network of associate organisations to design and deliver bespoke training and development interventions. Our offer is constantly evolving in response to feedback and developments in the education landscape, so please contact us or check online for the latest course availability.

Our partners include:

- Words First
- Nasen
- Autism Education Trust
- The British Dyslexia Association
- London District East Teaching School Hub
- Studio III

- Diane Rochford OBE
- Dr Pooky Knightsmith
- Try This Teaching
- Whole School SEND
- Aspire Education Alliance
- Coventry University London
- University of East London

Pricing: Annual package, open access to most courses (exclusions may apply to some courses delivered by external providers, or multiple sessions): £3,000-£5,000 depending on cohort size

Pay-as-you-go: Individual course pricing varies from £50 to £250 depending on course duration and the organisation(s) delivering the content.

For further details, and to book any of our training courses, please visit bdsip.co.uk/training-and-cpd/

To discuss your requirements, contact: Georgina Wright, Events and Marketing Co-ordinator on **07734 247793** or georgina.wright@bdsip.co.uk



"The impact of CPD has been excellent for me and the inclusion team. It has also rippled through the teaching and support staff across the school. My positive experience is something I am personally very grateful for. All the training, discussions and support were given in a positive way. I never felt judged, always encouraged, guided, (and sometimes cajoled). Well done BDSIP!"

Dawn Jones, George Carey Church of England Primary School, SENDCo



66

"Gillian has been a fundamental support to Rose Lane Primary. This includes: data analysis, setting up the school's Integris markbooks, support with the Government changes to how data is reported, and supporting us when sending data to receiving schools and the Local Authority.

Our data collection and analysis system, designed by Gillian, has been adapted to suit the needs of our pupils and school. As a result, we now have a bespoke, user-friendly system that is more efficient.

During the pandemic Gillian was able to provide us with high-quality training for our online home-schooling platform. This training proved to be very successful and both staff and pupils were pleased to be able to continue teaching and learning in a way that everyone can access."

Sarah Clements, Deputy Headteacher, Rose Lane Primary

DIGITAL SUPPORT SERVICES

Curriculum Computing and Data Support

Providing advice and support to develop teachers' confidence in computing, helping to shape the computing curriculum, and ensuring schools are well-prepared to interrogate pupil performance data.

Upon agreeing your school's needs, our advisory teacher will deliver two days of focused in-school support to meet computing curriculum requirements and/or support pupil data management.

The service also includes:

- Access to a wide range of materials including curriculum software, computing maps and case studies.
- Advice and support for online safety, including training for staff and parents.
- Introduction to new software and hardware to enhance your curriculum.
- Termly subject leaders' meetings to share best practice and plan improvements to schools.
- Access to computing CPD.

- Troubleshooting advice by phone or email throughout the year.
- Advice about assessment systems and system effectiveness.
- Data presentation materials including summaries of pupil performance data drawn from RM Integris.
- Advice and support for implementing and developing remote learning.
- Hands-on support, helping you to get the most from a variety of remote learning platforms.
- BDSIP will offer at least two days to work in partnership with your school, supplemented throughout the year by ongoing support via phone and/or email.

Pricing: £1,500

To discuss your requirements, contact: Gillian Bratley, Advisory Teacher for ICT, on **07968 511 883** or gillian.bratley@bdsip.co.uk

Primary and Secondary Internet Services

BDSIP are partnering with London Grid for Learning (LGfL) to provide a new internet connectivity service. There are a range of bandwidth options to ensure schools have the right connectivity for them. Schools can benefit from a connection with a range of bundled products for security, safeguarding, device management and curriculum.

These include:

- School level control of internet filtering with Webscreen 3.0.
- Sophos anti-virus for servers and workstations.
- Sophos anti-virus for all staff and governors at home.
- Sophos Phish Threat – CPD for staff.
- Malwarebytes.
- Gridstore disaster recovery – securing mission critical data offsite.

- FSM (PP) eligibility checker.
- Free website hosting.
- Impero monitoring solution (optional).
- Neverware licences to convert existing devices to Chromebooks for free.
- Adobe Creative Cloud licences.
- Access to curriculum software.

BDSIP will support schools through the transition to LGfL. We will also support schools throughout the lifetime of the contract and ensure they are getting the most from the connectivity and associated services.

Pricing: Pricing depends on the bandwidth required.

To discuss your requirements, contact: Gillian Bratley, Advisory Teacher for ICT, on **07968 511 883** or gillian.bratley@bdsip.co.uk

Anti-virus Service

For schools not on a BDSIP or LGfL internet connection, Sophos anti-virus licences can be purchased through BDSIP.

The Intercept X licences for workstations and servers will help to protect your school network against viruses including ransomware. Licences are valid for three years.

Pricing: Pricing depends on the number of licences required.

To discuss your requirements, contact: Gillian Bratley, Advisory Teacher for ICT, on **07968 511 883** or gillian.bratley@bdsip.co.uk





Education Data Management

Supporting schools to manage data effectively and providing insightful analysis for school improvement.

Our service will ensure your school is utilising its powerful data management systems to their full potential, saving you time and effort. We will provide you with early access to good quality, insightful data, helping you to identify and address strengths and weaknesses both at pupil and school level.

Our team of education data specialists, who have more than 30 years' experience, will:

- Coordinate statutory DfE returns, including termly pupil census, annual school workforce census and primary attainment data collections.
- Run briefings throughout the year to share new developments from DfE, BDSIP and Local Authority (LA) colleagues and highlight good practice.
- Provide comprehensive guidance and advice during all data collection exercises, with detailed documentation and helpdesk-style support.
- Source missing benchmark and pupil level data such as regional or national performance, UPNs, prior attainment and contextual information.

- Offer advice on the use and interpretation of statistical data including attainment, absence and exclusions.
- Provide access to leading education data analysis software: FFT Aspire (including Pupil Tracking Module), Perspective Lite and Nova Reports.
- Send destination schools early prior attainment data for transferring pupils, for example year 6 to year 7.
- Provide early access to robust provisional data through summary reports and real-time dashboards, enabling schools to evaluate performance and act quickly.
- Support schools during Ofsted inspections (e.g. analysing and supplying data at short notice).
- Share trend summaries for headline attainment measures with schools, LA, regional and national benchmarks (where a data sharing agreement is in place to meet GDPR requirements).

Pricing: £3,845-£4,550 depending on cohort size.

Further analysis and support, tailored specifically for your school, are available on request.

To discuss your requirements, contact: Simon Davies, School Performance and MIS Support Manager, on **07866 912 849** or **simon.davies@bdsip.co.uk**

Management Information System (MIS) Support Service

Comprehensive customer-focused support and high-quality training to maximise the benefits of RM Integrus G2.

Our experienced RM accredited specialists will provide dedicated support for all system modules, including:

- Core MIS – basic operation including adding pupils and creating classes.
- Attendance – recording of pupil-level attendance information.
- Assessment – creation of assessment templates and recording of non-statutory assessment and target setting information for pupils.
- Statutory assessment – recording statutory assessment information about KS1 pupils and importing statutory assessment information for other key stages.
- Statutory returns – the MIS team works closely with the education data management team.
- Import/export of pupils – use of the common transfer file (CTF) to import pupils into the MIS and to export pupils when they leave the school.
- End-of-year process – preparing the MIS for use in the new school year, moving pupils between year groups and taking cohorts off-roll.
- Report writing – writing ad hoc reports to extract data from the MIS.
- Markbooks – support for LBBB assessment markbooks and producing new markbooks in light of changes to school requirements.
- Report writing service – where generic reports are identified that are needed by several schools, for example to support statutory or LA returns, the MIS team will write and distribute reports to all client schools as necessary.

An extensive training programme covering the following essential elements will enable staff to utilise the system to its full potential with confidence:

- System administration and navigation using advanced features.
- Processes for the start and end of the academic year, from enrolling new pupils to rolling the system forward in preparation for the next.
- Completing statutory returns including pupil census, school workforce and primary teacher assessment.
- Using new markbooks and getting the most from the assessment module to analyse pupil outcomes.
- Effective use of the behaviour module and pupil tracking for SENDCOs/ inclusion coordinators with insightful data analysis.

Pricing: £3,095

Please note that schools using RM Integrus are required to have a support agreement either directly with RM or an approved support partner such as BDSIP.

Additional bespoke training is also available on request.

To discuss your requirements, contact: Simon Davies, School Performance and MIS Support Manager, on **07866 912 849** or **simon.davies@bdsip.co.uk**





66

"We can highly recommend governor services from BDSIP.

If we only had three words to describe the service we receive, they would have to be:

- *Knowledgeable - always able to answer our questions/queries, with helpful references to latest guidance.*
- *Professional - appropriate and personable communication and interaction whether written, virtual or face to face.*
- *Efficient - timely and very helpful reminders regarding deadlines and swift responses to queries".*

Marie Ziane, Headteacher,
Becontree Primary School

GOVERNOR SERVICES

Governor Advice and Support

Effective administration and strategic advice

Effective governance is essential in providing schools with strategic direction and leadership. It also holds school leaders to account for educational and financial performance in order to achieve the best outcomes for all children and young people.

BDSIP offers a package which supports effective governance by providing:

- Support and advice when you need it via phone or email – for matters of statutory governance in all types of schools (community, academy, diocesan) – by our highly experienced governor services manager.
- Access to best practice exemplars, including policies on governance, finance matters, school improvement and inclusion, and other education services.

Governor Advice, Support and Clerking

In addition to effective administration and strategic advice we can allocate a skilled and trained clerk who will prepare agendas for governing board meetings, coordinate briefing reports, support and minute the full board meetings, monitor the board membership, governors' skill sets and attendance, provide advice on statutory matters and maintain governing board data.

Our skilled clerks will ensure that your governing body is fulfilling all statutory duties and complying with regulations. Information will be sent to governing bodies at least seven days in advance of meetings.

We also have a strong track record in supporting schools and governing boards which need to improve

in order to become 'good' or 'outstanding'.

Pricing: Governor advice and support: £750 Governor advice, support and clerking (up to four meetings): £1,950. Governor advice, support and clerking with governor training (bundle package): £2,750

We can provide a range of additional clerking support and advice, bespoke to the needs of your school.

Please contact us to discuss your requirements.

To discuss your requirements, contact: Jackie Day, Governor Services Manager, on **07866 912 860** or jackie.day@bdsip.co.uk

Governor Training

Developing governors' skills, knowledge and understanding to improve your school's overall effectiveness.

Our comprehensive online training programme, delivered by a nationally respected adviser on school improvement and governance, will focus on a wide range of themes, including:

- Understanding the purpose of governance - aimed at those new to school governance and governors who want to refresh their understanding.
- Preparing for your next Ofsted inspection.
- Understanding the role of governance in school improvement - ensure the governing board has effective strategic oversight of their school's plans, actions and outcomes.
- How to monitor your school and hold leaders to account for effective learning and care of all pupils.

- How to effectively monitor the financial performance of your school.
- Schools' statutory responsibilities in relation to careers education and information, advice and guidance (CEIAG).
- How to have impactful board meetings - planning, structure and conduct of governing board meetings.
- Roles and responsibilities of chairs, vice chairs and chairs of committees – leading the team.
- Role of the link/lead governor – including visits to school/classes.
- Role of the safeguarding governor – what it means and what you should do to ensure that the school remains a safe and secure place for everyone.
- Role of the SEND governor – what it means, why it's important, and how you can be effective.
- Role of parent governors.

Annual face-to-face governance conference – all governors are invited to attend the annual conference, covering a wide range of national and current issues.

Pricing: Governor training: £900. Governor advice, support and clerking with governor training (bundle package): £2,750. Additional in-school training and advice services can also be provided – please contact us to discuss your needs.

Contact: Jackie Day, Governor Services Manager, on **07866 912 860** or jackie.day@bdsip.co.uk

Headteacher Performance Management

Our experienced school improvement advisers will guide governors through the performance management process. This service for governors delivers a summary of the previous performance cycle, including assessment of pupil progress, and the negotiation of new performance objectives. This can be purchased as a standalone service or can form part of the school improvement adviser's time through the school improvement partner programme (pages 4-5).

Pricing: £500 where purchased as a standalone service To discuss your requirements, contact: Kate Gooding, Senior School Improvement Adviser – on **07976 239 885** or kate.gooding@bdsip.co.uk



SIGNPOSTING OTHER SUPPORT

Employee Assistance Programme (EAP) by Education Support

Education Support are a UK charity who aim to support the mental health and wellbeing of education staff (teaching and non-teaching) in schools, colleges and universities. As well as a selection of free support resources on their website and an emergency telephone helpline for use in a mental health crisis, they also offer a comprehensive EAP which includes:

- Confidential emotional support and counselling available 24 hours a day, 365 days a year via telephone.
- Up to six sessions of face-to-face or telephone counselling.
- Access to online Cognitive Behavioural Therapy (CBT).
- Management consultation to support those responsible for managing others.
- Specialist information on work-life balance.
- Financial and legal information.
- Information on local services such as elder care and childcare.

Pricing: £9 per staff member, per annum

Contact: Daren Chisholm on Daren.Chisholm@edsupport.org.uk

The Key

The Key provides up-to-the-minute sector intelligence and resources that give leaders in education the knowledge to act. Over 120,000 schools and academies are using The Key to get the quality-assured guidance they need to run their schools, every day.

The Key for School Leaders

The Key for School Leaders helps your senior leadership team save time with everyday tasks and respond to national changes quickly and confidently, with clear guidance and actionable next steps that cuts through the noise.

IdeaStream

With IdeaStream, get bitesize CPD videos and streamed live events featuring the most knowledgeable school leaders and their best practice, right at your fingertips.

Safeguarding Training Centre

Safeguarding Training Centre is the simplest, most cost-effective and time-saving way for designated safeguarding leads (DSLs) to train staff on the latest requirements and report on staff knowledge.

The Key for School Governors and GovernorHub

With GovernorHub and The Key for School Governors, your governing board has a secure place to manage their work and access to expert advice when they need it, all in one place. To arrange a trial of The Key's services, or to discuss pricing, contact: Kieran Dwyer on kieran.dwyer@thekeysupport.com





MEET THE TEAM

Our board

The Board is responsible for setting the strategic direction of BDSIP, including service development, priorities, and pricing. The composition of the Board, which includes six headteacher directors, reflects the schools-led and owned nature of our organisation.

- Philip George, Independent Director and Chair
- Simon Abeledo, Primary School Headteacher
- Jacqui Barnard, Primary School Headteacher
- Sarah Kinnaird, Primary School Headteacher
- Kim Cerri, Special School Headteacher
- Richard Paul, Secondary School Headteacher
- Tony Roe, Secondary School Headteacher
- Jamie Goate, Governor Director
- Hafi Ali, Non-executive Director
- Marcello DeMello, Non-executive Director
- Gail Clark, Local Authority Director
- Alison Stuart, Local Authority Director
- Ben Spinks, Chief Executive, BDSIP

Our People

Senior Leadership Team

Ben Spinks, Chief Executive
ben.spinks@bdsip.co.uk
07974 247 842

Kate Gooding
Senior School Improvement Adviser
kate.gooding@bdsip.co.uk
07976 239 885

Aasiya Hassan
Head of Careers Education and Work Experience
aasiya.hassan@bdsip.co.uk
07976 238 135

Lee Boyce
Principal Adviser, Education and Inclusion
lee.boyce@bdsip.co.uk
07890 630 644

Hannah Hamid
Senior Inclusion Adviser
hannah.hamid@bdsip.co.uk
07821681746

Mike Ormerod
Head of Central Services
mike.ormerod@bdsip.co.uk
07866887077

For more information about BDSIP, including pen profiles of all staff and key associates, see <https://bdsip.co.uk/our-people/>

Our Service Standards

A clear set of standards underpins all of the work that we do:

Customer focused

- We deliver what we say we will, when we say we will
- Services are tailored to meet the needs of your school
- We communicate clearly at all times
- We are accessible and respond to email and phone calls quickly – typically within one working day.



Quality services

- Services are clearly defined, are accessible, and are presented and delivered to consistently high standards
- Pricing is clear, transparent and delivers excellent value for money
- We continuously evaluate and improve services
- We will write up key reports and school visits within five working days.



Our people and associates

- Bring credibility and expertise
- Are appropriately supportive and challenging
- Are ambassadors for BDSIP, our schools and our young people
- Recognise that the details matter
- Treat everyone with respect at all times.





GET IN TOUCH

We are constantly developing our service offer in response to emerging school priorities, feedback, and local/national policy changes.

If you would like to discuss your school's requirements, or how we might help you, please contact us on:

020 8227 2636

info@bdsip.co.uk

All of our services, training, conferences and professional development courses can be booked online.

Follow us on social media to keep up with the latest news, courses, offers and events:

BDSIPed

bdsip